



UNIVERSITY OF CAMBRIDGE INTERNATIONAL EXAMINATIONS
General Certificate of Education Advanced Subsidiary Level and Advanced Level

GEOGRAPHY**9696/33**

Paper 3 Advanced Human Options

May/June 2012

INSERT

1 hour 30 minutes

READ THESE INSTRUCTIONS FIRST

This Insert contains all the Figures and the Photograph referred to in the questions.

This document consists of **4** printed pages.



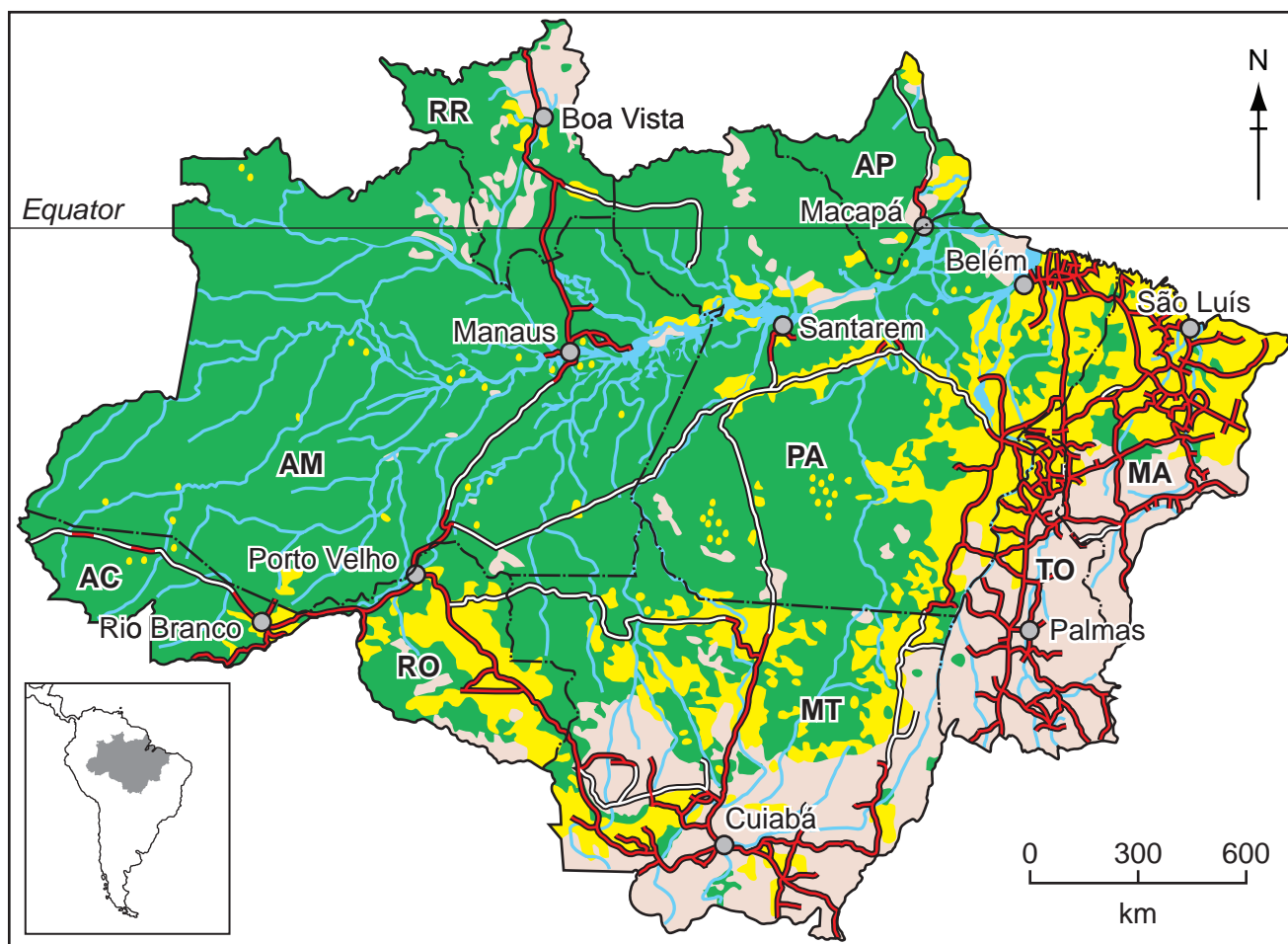
Photograph A for Question 2

Manufacturing production in a toy factory in Asia, 2004



Fig. 1 for Question 4

Deforestation of the Amazon forest, Brazil, 2007

**Key**

- deforested by 2007
- forest
- non forest
- water
- urban areas
- paved roads
- unpaved roads
- state boundary

States

- AC** Acre
- AM** Amazonas
- AP** Amapá
- MA** Maranhão
- MT** Mato Grosso
- PA** Pará
- RO** Rondônia
- RR** Roraima
- TO** Tocantins

Fig. 2 for Question 6

Life cycle model of the development of resorts and tourist destinations

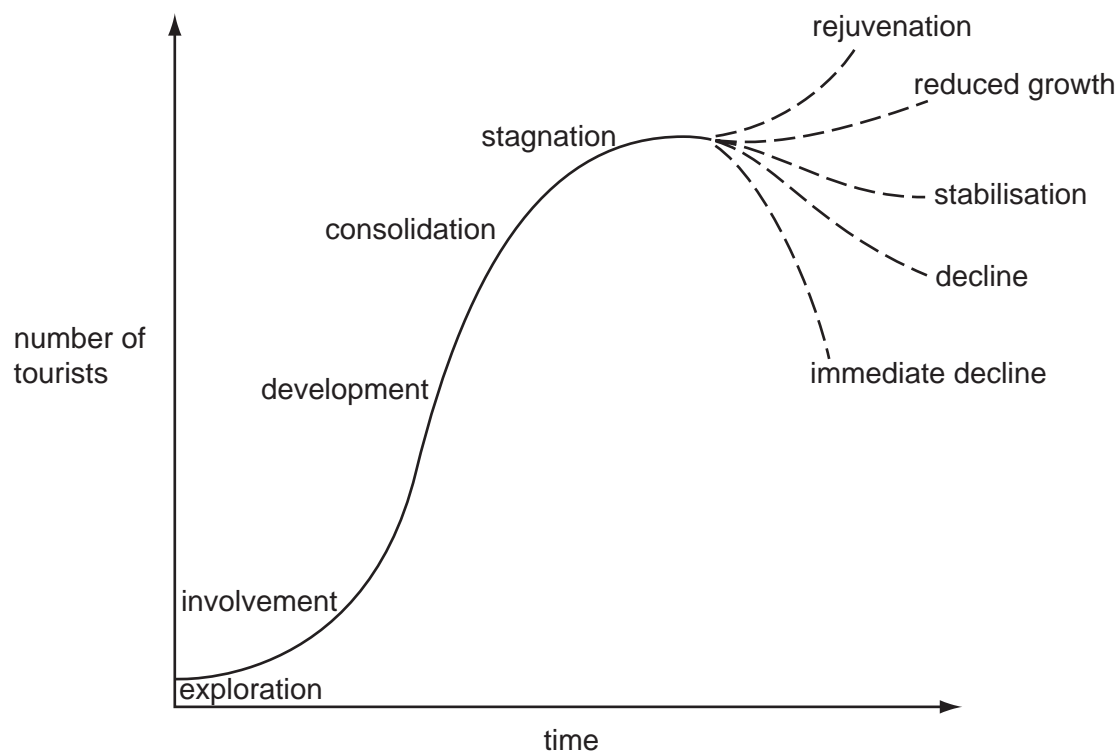
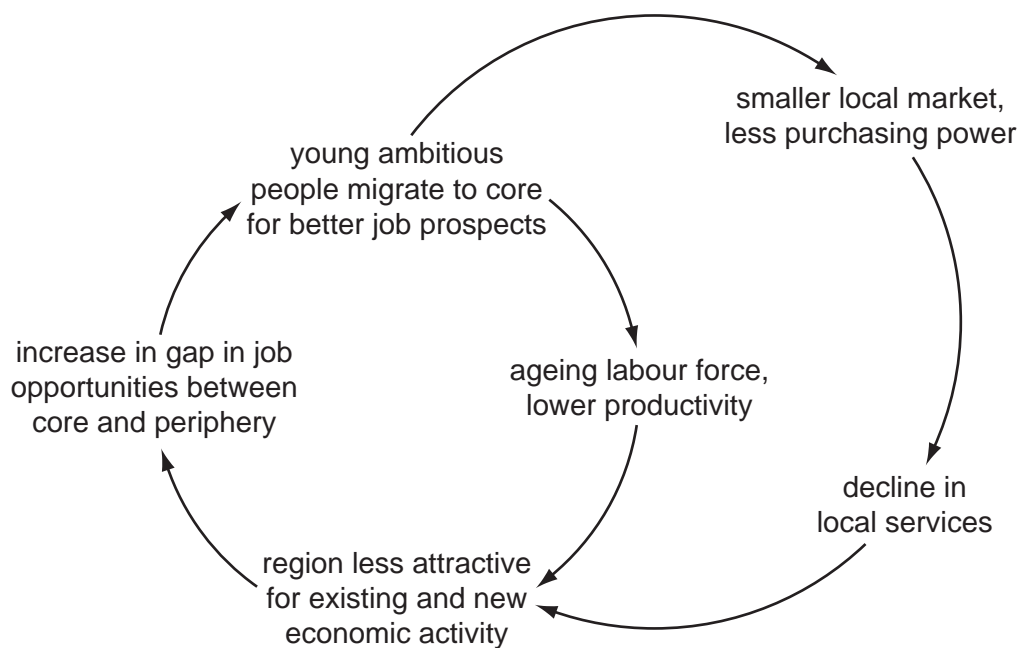


Fig. 3 for Question 8

Downward spiral in a peripheral region resulting from labour outmigration



Permission to reproduce items where third-party owned material protected by copyright is included has been sought and cleared where possible. Every reasonable effort has been made by the publisher (UCLES) to trace copyright holders, but if any items requiring clearance have unwittingly been included, the publisher will be pleased to make amends at the earliest possible opportunity.

University of Cambridge International Examinations is part of the Cambridge Assessment Group. Cambridge Assessment is the brand name of University of Cambridge Local Examinations Syndicate (UCLES), which is itself a department of the University of Cambridge.